

**Multan:** The City of Sufis  
Punjab, Pakistan



Multan is also known as the city of saints, mostly because it has the highest number of shrines, it's also famous for its seasonal fruits sugar cane, mangoes, citrus and guavas. Along with these salient features Multan also offers a vast handicraft market which includes chatai weaving and cane wood weaving. The beauty of Multan can be seen at a glimpse from the Multan fort, where it is said that alexander and later Mahmud Ghaznavi camped. Along this space there is a prolific shrine which was made after an auliya Shah Rukhne Alam, the most prominent elements of design within this shrine is the use of open courts and its bulky and monumental presence. The tile work enhances the experience of the divine, clearstory lighting washing the interior space of the shrine and highlighting the vibrancy and hues of handmade ceramic tiles. Encompassing this shrine are bazaars which have a density to them, walking along the outer ring of the fort there are markets and bazaars, mostly shops offering varieties of food.



Multan has a population of 3.06 million people with a male to female ratio of 25 is to 21, in an average 7 people live in one dwelling. Shah Rukne-Alam Town lies toward north-east of the District. Its total area is about 493 square kilometer, and its population in 1998 was 600,365, implying a gross population density of about 4.9 persons per acre. In terms of percentage, the Town's area and 1998 population are 13.3% and 19.6% respectively. The Town has 25 union councils.



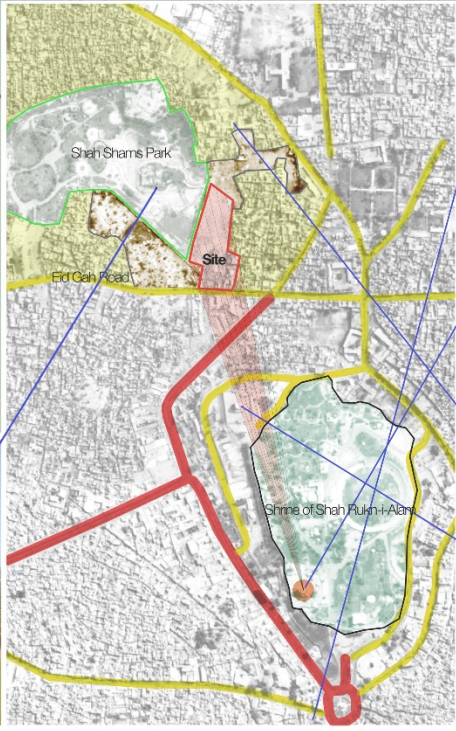
Tomb of Shah Rukhne Alam

Tomb of Hazrat Musa Pak Shaheed

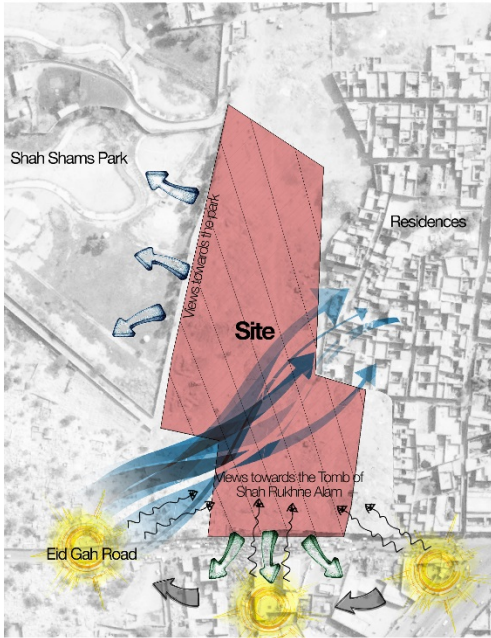
Tomb of Shah Shams

# Multan: The City of Sufis

Punjab, Pakistan



## Site Context

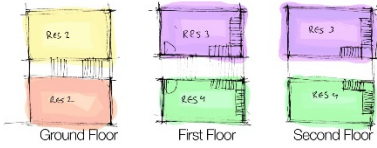


## The Idea

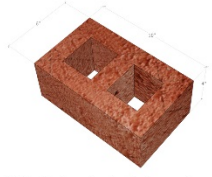
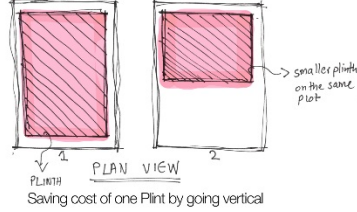
It is based upon the idea of new urbanism, the highlighted features are public squares, the community based lifestyle is promoted and people are made to interact through pedestrianized walkways that intersect at nodes, cars and vehicular movements are restricted and discouraged, parking and entrances to backyards are connected. Longer routes are to be covered using cycle rickshaws this provides part-time job opportunities to people within the community. Workshops are given within the clustered arrangement for women which include pottery and small handicrafts skills.

This housing is for the artisans, which is a major cottage industry in Multan. Within the design, there is consideration of maintaining privacy, the doors to the main entrance are off axis and hidden behind a chunky partition wall, the parapets are deliberately kept at a height of 4 feet; outdoor sitting areas are provided to all occupants. All the rooms are kept with 3 open sides so that each room is naturally ventilated, there is an elaborate use of jafferey for the same reason for maintaining privacy and yet keeping the wind flow clear; it is an evening ritual that people come for outdoor sitting known as a chu bara because of which the design has many outdoor spaces. Social activity is encouraged via a common main path to which all clusters open up to.

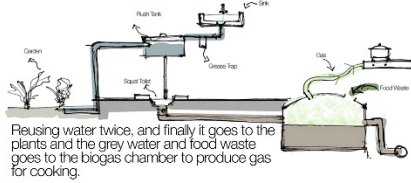
# Single Story Unit



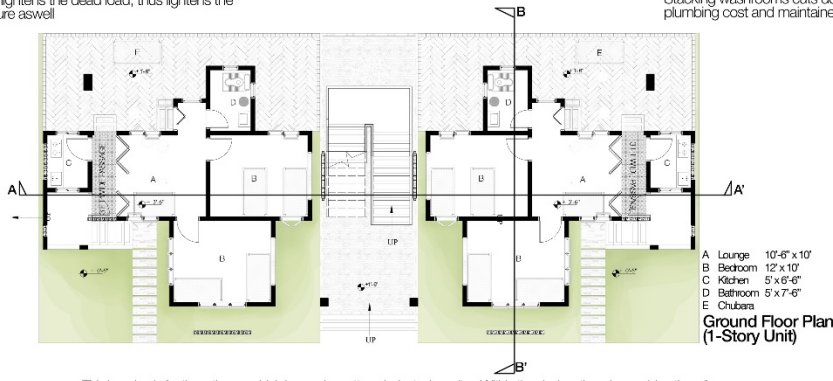
Going verticle saves foundation cost.



Using hollow clay brick to create a vacuum between the outdoor and the indoor. It also lightens the dead load, thus lightens the structure as well

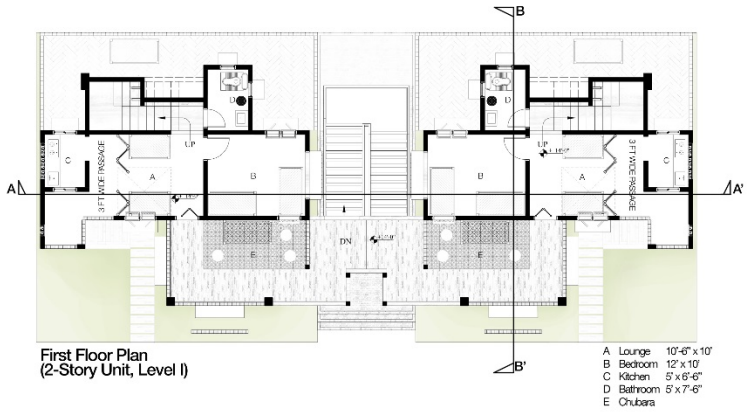
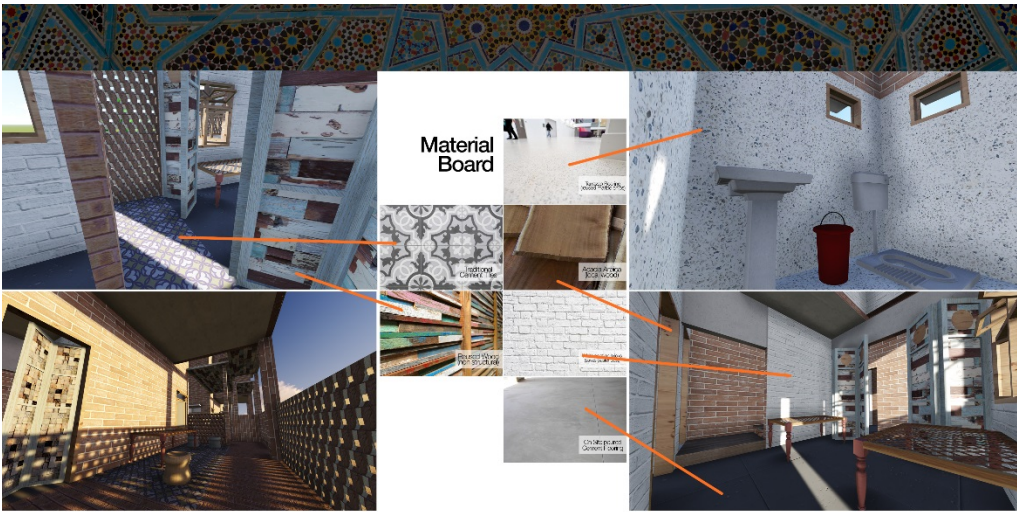


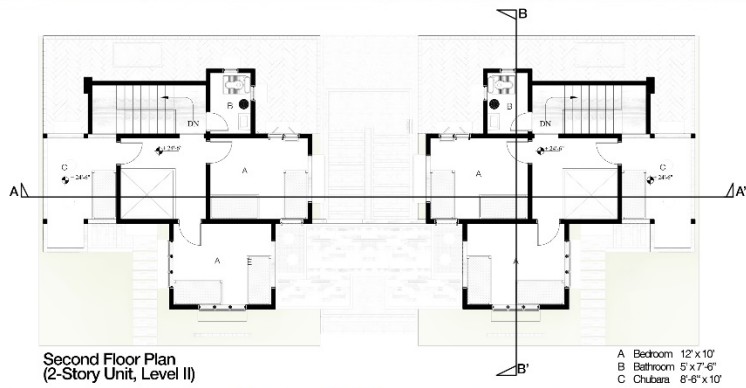
Stacking washrooms cuts down the plumbing cost and maintenance



This housing is for the prisans, which is a major cottage industry is mutan. Within the design, there is consideration of maintaining privacy, the doors to the main entrances are off axis and hidden behind a chunky partition wall, the parapets are deliberately kept at a height of 4 feet, outdoor sitting areas are provided to all occupants.







Rear Elevation

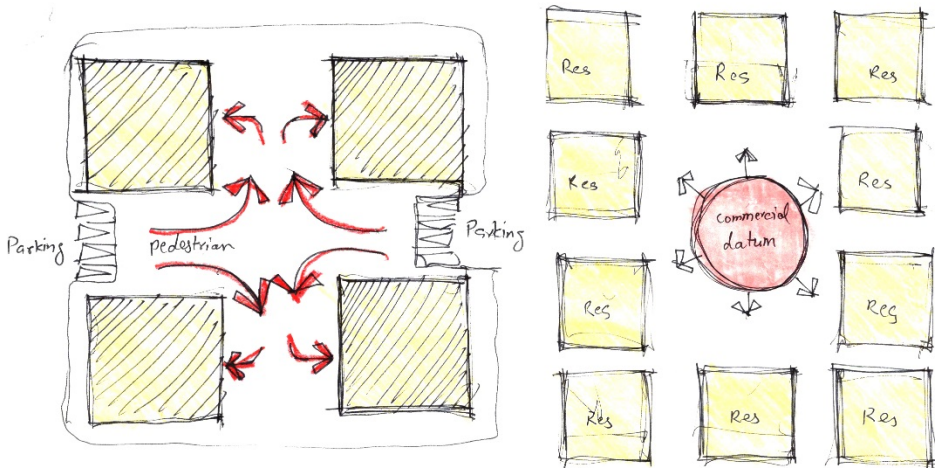


Front Elevation

# Strategies for Master Planning

All the pavements are redbrick which is a lot cheaper than block masonry; there is use of bitumen upon the road and pedestrian walkways in order to minimize cost. There are playing spaces for children located close by each cluster which ensures that the children are safe and secure within the community.

Utility store, dispensary, mosque and milk shop are provided within the heart of the master plan within the range of 5-10 minutes' walk from the furthest cluster, palette wood which is reused for non-structural members of the doors, the same wood is used for low cost roofing over the outdoor sitting area. Hollow clay bricks mixed with small amounts of bricks are used for the residences which allow keeping the internal spaces cooler. The one story and two story units are stacked over each other saving the cost of the plinth and the foundation structure to half; the washrooms are kept over each other to save the plumbing cost and well as its maintenance. The grey water is sent to the biogas slurry chamber where food waste can be dumped as well creating gas which can be used in time of shortage of gas supply.

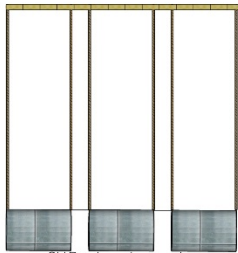


Designing entrances in such a way the the open up to a main open space within a cluster. Encourages interation between residents.

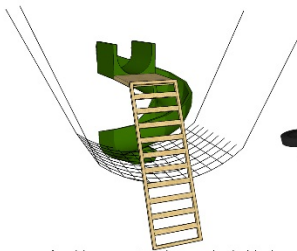
Designing clusters around a commercial datum

## Playground Concepts

The playground is design, reusing different materials and assembling them according to the requirement. Along with every equipment, a sign board placed to educate the children about various possibilities of reusing and recycling materials.



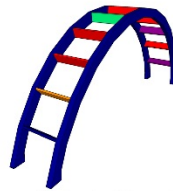
Old Barrels as playground equipment



An old cargo net and a wooden ladder is attached to a used old slide



Using Old Tires as playground equipment



Wood and metal is reused to make this monkey bar.

# Master Plan

Shah Shams Park

Residences



Scale: 1/64" = 1'

